

Inclusion – providing effective learning opportunities for all pupils

The national strategies define inclusion as “*concerning all groups of pupils who may be under-performing because their personalised learning needs are not being met*”. The learner is very much seen as a partner in learning.

Current educational reform is clearly promoting a system that fits the individual rather than the other way round.

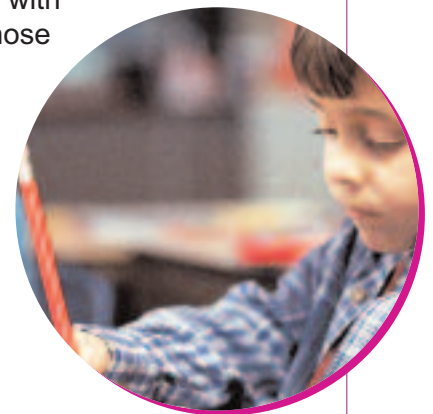
ICT can be an immensely valuable tool in providing all pupils with real opportunities to make progress and achieve, including those pupils with special educational needs (SEN) and those who are Gifted and Talented.

ICT enables pupils to access their learning in a wide range of different and imaginative ways. Visual mapping software, for example, can support and positively impact on areas of learning such as literacy and the development of thinking skills, and can provide challenge for Gifted and Talented pupils.

The use of ICT can support and transform pupils' writing, and the evaluation and presentation of work; talking books, and the use of sound and video, can encourage and motivate the reluctant reader, or provide information for those who have reading difficulties.

Pupils with impaired vision or literacy difficulties need access to visual and written materials in different formats. For these pupils there is the opportunity to access large print, or to use a digital camera to tell a story; or to use a talking word processor, or symbol word processor and desktop publisher, to help them to communicate their ideas and meaning.

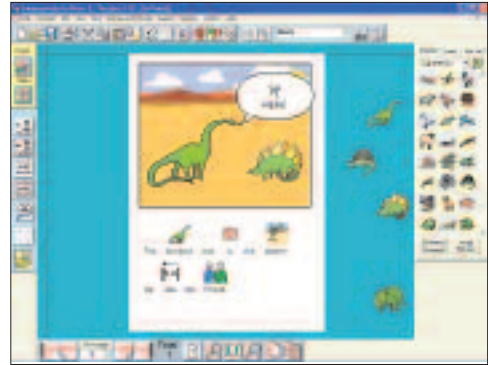
Pupils in need of specialist equipment are able to use ICT to enable them to take part in the curriculum, learn new skills and experience success. Through specific software and access devices, ICT offers an array of tools including switches, tracker balls, joysticks, overlay and other alternative keyboards.



LOGOTRON PRODUCTS FOR INCLUSION

Communicate: In Print 2

Communicate: In Print 2 is a flexible symbol-supported desktop publishing package for creating resources such as books, worksheets newsletters and posters. It has full symbol functionality alongside freedom of layout. Communicate: In Print 2 is supplied with the complete Widgit Rebus Symbol Set, well known among symbol users. It acts as a comprehensive collection of line drawings for use in supporting literacy.



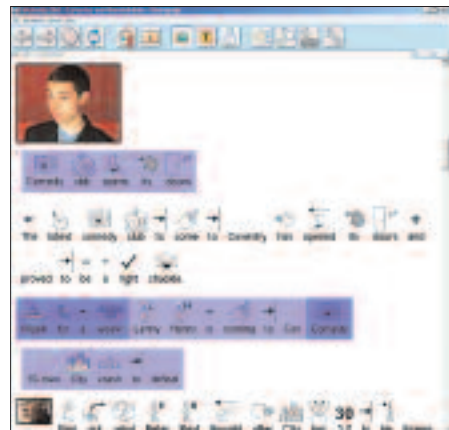
Communicate: By Choice

Communicate: By Choice uses the full Widgit Rebus Symbol Set in black & white and colour to provide students and learners with diverse and motivating learning experiences. It is designed so that users can answer a range of question types in over 100 different activities. Communicate: By Choice is supported by coherent ready-to-go resources covering a number of educational topics and you can also edit resources or create your own.



Communicate: Webwide

Communicate: Webwide is a new concept in web browsing which allows you to view web pages in symbols, plain or talking text. Many web pages are too complex for users with learning disabilities, those new to the English language or those who have difficulty with text. Communicate: Webwide gives support and accessibility options in viewing the web that make meaningful browsing a reality.



Thinking with Pictures KS1-3 P1-P6

Thinking with Pictures is a model mapping environment, accessible to all pupils. It is designed to help learners create subject interest, sustain concentration, organise ideas and construct memorable new meaning, regardless of ability or learning style. A vast bank of clip art and literacy support in the form of concept symbols and synthesised speech, make this an ideal environment for learning and comprehension, for both mainstream and SEN pupils.

